



GET YOUR FOOT IN THE
MANUFACTURING DOOR

Certified Logistics Technician

WASHBURNTECH
UNIVERSITY

[MANUFACTURING]

Speed up your success with a career in the high-tech, fast-growing manufacturing industry. The knowledge, skills, and professional behavior developed through this program will help qualify and prepare you for in-demand, strong career pathways in high-performance logistics.

LEARNING AT WASHBURN TECH

By completing our program and earning the MSSC Certified Logistics Technician credential, you will have the skills and knowledge needed to work safely and effectively in a logistics setting, including the ability to classify products based on their attributes, analyze customer orders, and create a plan for order processing. Upon completion, you will earn a 15-credit-hour technical certificate and be eligible to take the MSSC tests. **Please note, this program is offered only online. It is not financial aid eligible but does qualify for the Kansas Promise Scholarship.**

JOB AND SALARY OUTLOOK

Area manufacturers report being challenged to find enough workers for their operations. More opportunities are available to those with relevant education and training. The

average salary for an entry-level helper/production worker is \$16.77 an hour or \$34,890 annually, according to the Kansas Department of Labor. The average wage is \$26.30 an hour or \$54,700 annually.

ENTRY REQUIREMENTS

Adult students must complete an application and submit an official copy of all transcripts. Please see an admissions counselor for details.

CERTIFICATIONS

- + OSHA-30 General Industry
- + Certified Logistics Associate
- + Certified Logistics Technician

Build your best self.

TALK TO AN ADMISSIONS COUNSELOR TODAY!

785.670.2200

CAREERS IN MANUFACTURING »

- + industrial maintenance
- + food production
- + machinist
- + distribution facility
- + educator
- + logistics specialist
- + welder
- + line supervisor



Certified Logistics Technician

COURSE DESCRIPTIONS

SUPPLY CHAIN LOGISTICS

This course covers a range of industrial safety and material handling topics, including forklift operation, load distribution, and handling different types of materials. Participants will also learn about safety procedures and regulations related to electrical safety, welding safety, and fire safety, and how to effectively utilize safety data sheets. The course is designed to provide participants with the knowledge and competencies to identify and mitigate potential hazards in industrial settings, demonstrate proper safety procedures, and implement material handling practices that improve efficiency, safety, and compliance.

CERTIFIED LOGISTICS TECHNICIAN (CLT 102)

This course prepares students for work activities and related skills involved with moving material throughout the supply chain: to and from production sites, to warehouses and distribution centers, to material handlers within the various transportation modes (truck, air, rail, water).

CERTIFIED LOGISTICS TECHNICIAN (CLT 104)

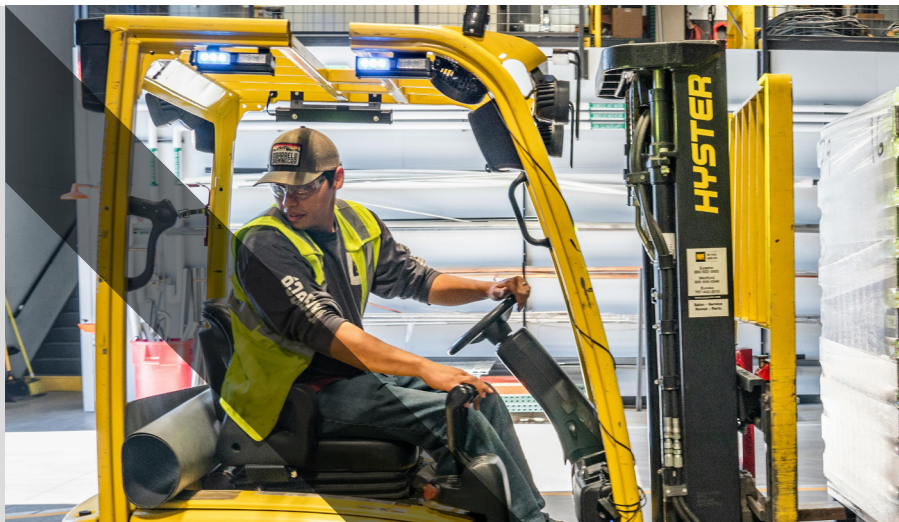
This course will provide students with the training, knowledge and skills that mid-level material-handling workers in supply chain logistics will need. Students who successfully complete the course will be eligible to take the assessment to become a certified logistics technician.

OSHA - 30 HOUR CONST IND CERT

Students will learn basic OSHA regulations and safety. The students will also learn how to read the OSHA manual properly. The course will stress the importance of personal protective equipment; fall protection, hazard recognition and other topics connect to on the job site safety. The course will also provide the student with an understanding of current safety regulation, established safety practices, and the impact of behavior and environment on injury prevention.

WORKPLACE SKILLS

This course focuses on communication concepts, skills and behaviors, and safety practices utilized in the workplace. The course demonstrates the relationships between listening; oral communication; human relations skills; problem-solving and teamwork dynamics; time and resource management; and work ethics and job interviewing; with success in a student's desired field.



APPLICATION CHECKLIST



**SUBMIT
APPLICATION**



**MEET WITH
ADMISSIONS**



**SUBMIT
TRANSCRIPT(S)**



**ENROLL IN
CLASSES**

2025-2026 PROGRAM COSTS (Estimated)

	HIGH SCHOOL	ADULT
Tuition	n/a	\$2,475
All other fees	n/a	\$890
TOTAL	n/a	\$3,301

*Tiered courses are paid by Excel in CTE. Non-tiered courses are paid by the student.

ADDITIONAL CHARGES (Estimated)

	HIGH SCHOOL	ADULT
Tools/Books	n/a	\$0

MORE INFO »

For more programs, enrollment and course schedule information, please contact Admissions.

CALL **785.670.2200**

TO TALK W/ ADMISSIONS COUNSELOR